



P517-265

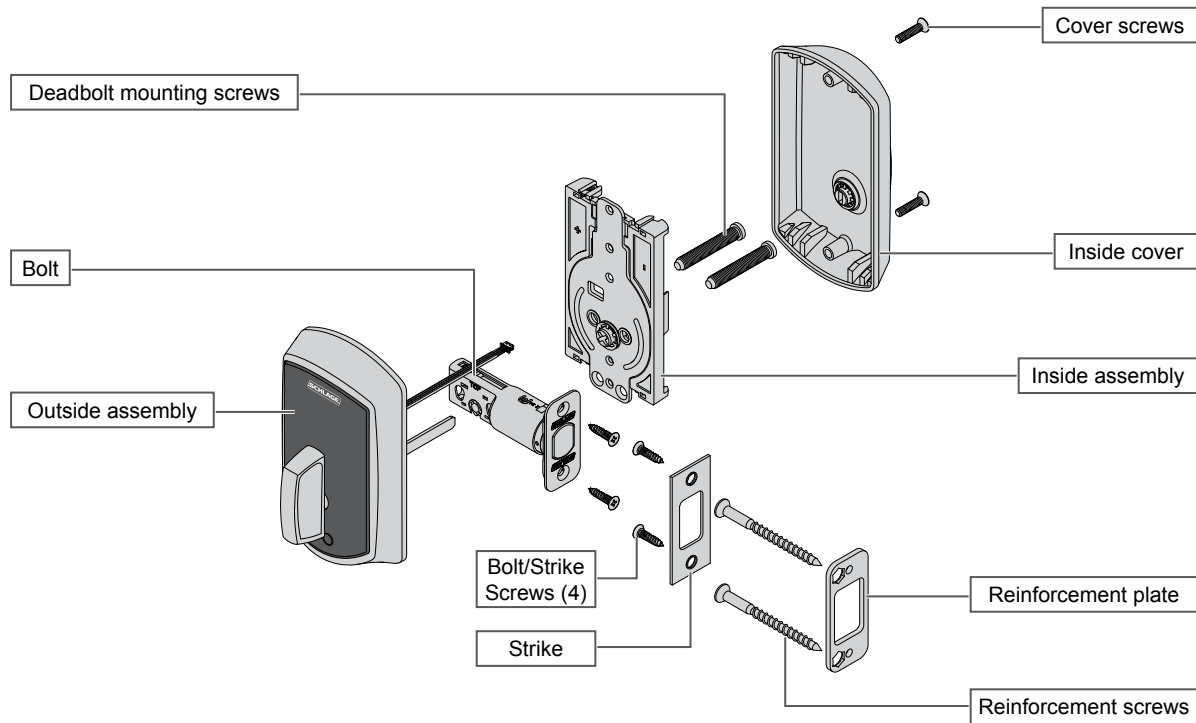
Schlage Control™ Smart Deadbolt



Model BE467F

with Engage Technology

Installation Instructions



Credentials not included.

Warnings and Cautions



WARNING

Warnings indicate potentially hazardous conditions, which if not avoided or corrected, may cause death or serious injury.



CAUTION

Cautions indicate potentially hazardous conditions, which if not avoided or corrected, may cause minor or moderate injury. Cautions may also warn against unsafe practices.

Caution: Cautions indicate a condition that may cause equipment or property damage only.

Prepare for Installation

Tools Needed

- Phillips screwdriver
- Tape measure

Optional Tools

- Flathead screwdriver
- Torx™ driver

Important Notes



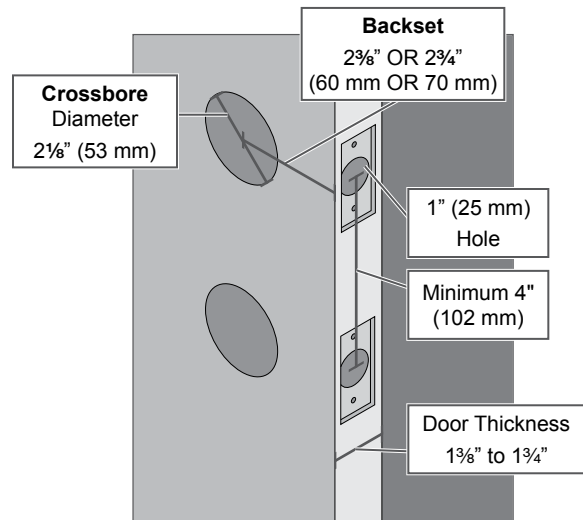
WARNING

Install and test lock with door open to avoid being locked in or out!

Caution: Use provided bolt!
DO NOT use a power drill for installation!

Check door dimensions.

See consumer.schlage.com/Service-Support for door preparation instructions if dimensions are different.



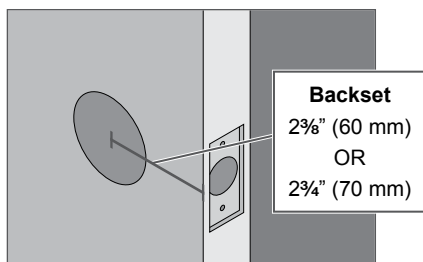
Install the Lock

1 Install bolt and strike.

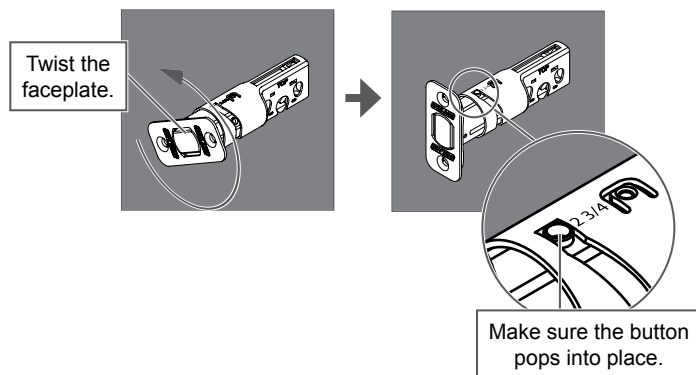
Caution: Use provided bolt!

1a Adjust bolt length, if necessary.

Measure the backset.

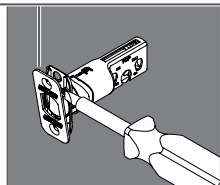


If the measurement is 2 3/4" (70 mm), extend the bolt.

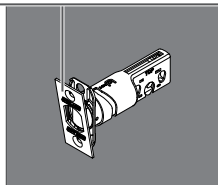


1b If desired, change to the square-corner faceplate.

1. Use a flathead screwdriver to pry the faceplate off.



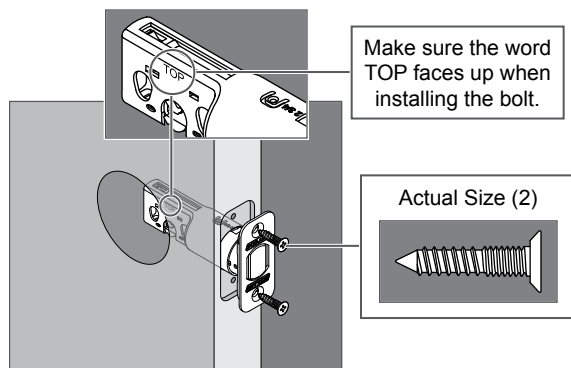
2. Press the square-corner faceplate into place.



1c Install the bolt into the door.

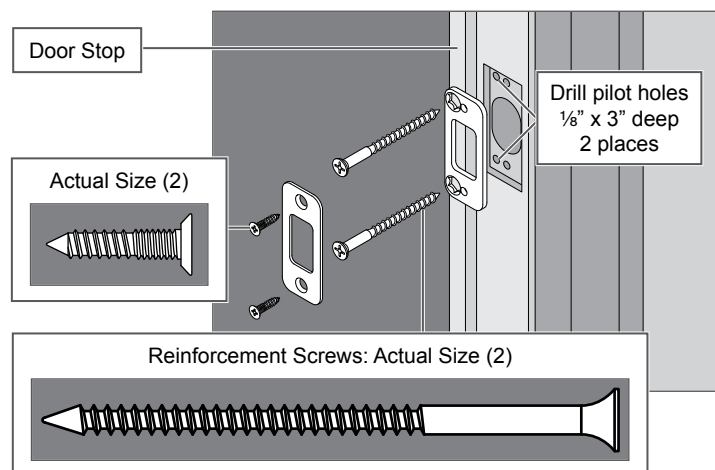
CAUTION

If the bolt does not remain retracted throughout installation, locking and unlocking could be reversed, resulting in an unsecured residence.



1d Install the strike into the frame.

Install all the parts shown for maximum security.

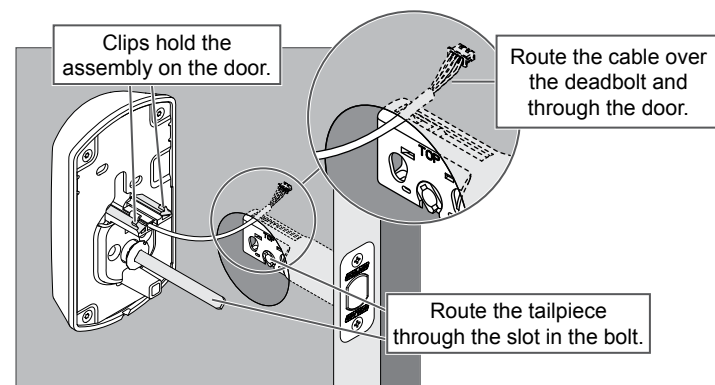


2 Install the outside assembly.

CAUTION

If the bolt does not remain retracted throughout installation, locking and unlocking could be reversed, resulting in an unsecured residence.

2a Install the outside assembly on the outside of the door.

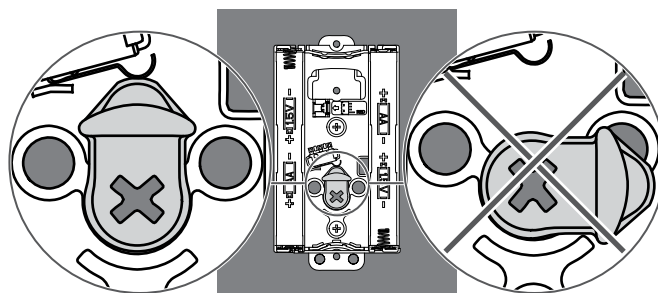


3 Install the inside assembly.

CAUTION

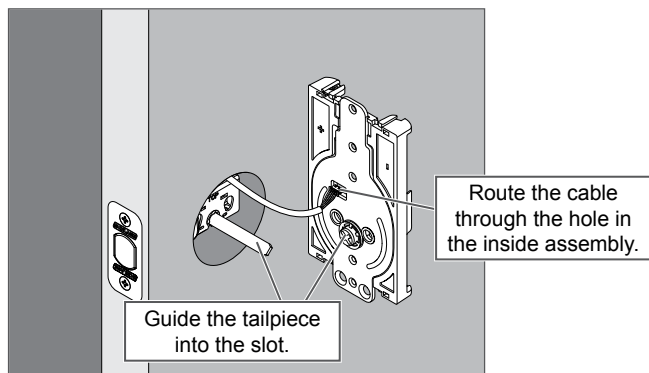
If the cam is not in the correct position during installation, locking and unlocking could be reversed, resulting in an unsecured residence.

3a Make sure the cam on the inside assembly is in the correct position.



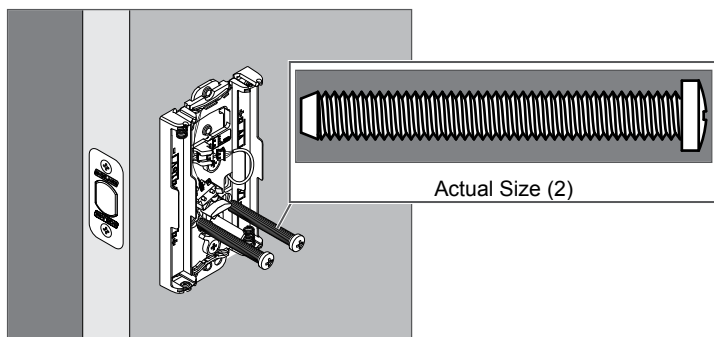
3b Install the inside assembly on the inside of the door.

① **Bolt must remain retracted!**

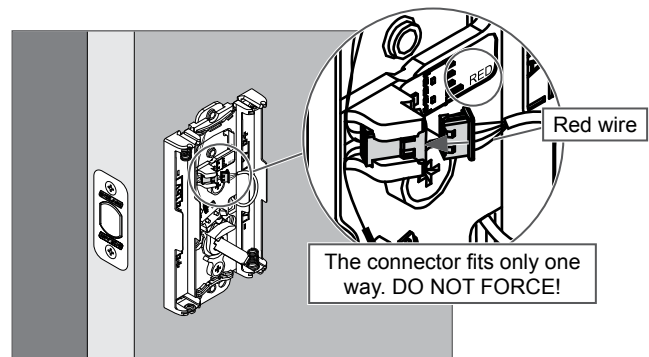


3c Secure the inside assembly with two screws.

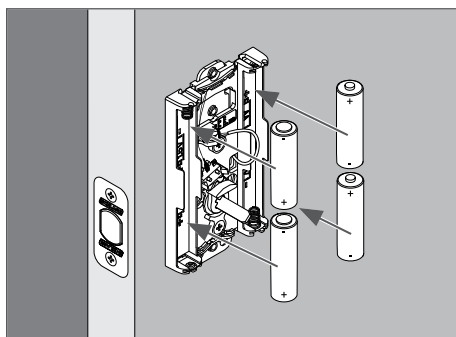
① **If the screw holes are blocked by the cam, see step 3a.**



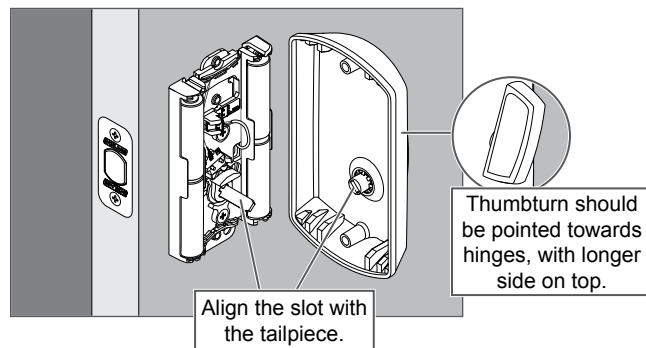
3d Connect the cable to the inside assembly.



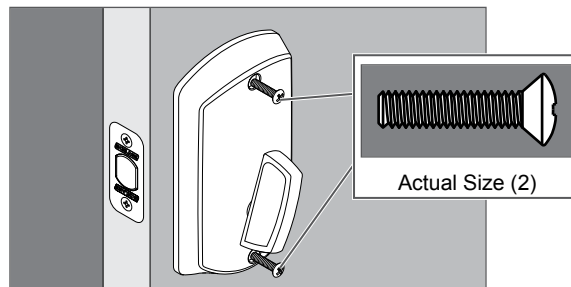
3e Install the batteries.



3f Install the inside cover.

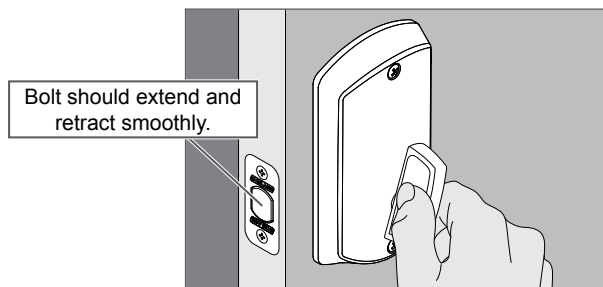


3g Secure the inside cover with two screws.



4 Test the Lock

4a Extend and then retract the bolt using the inside bolt throw.



① **Outside bolt throw should spin freely until a valid credential is presented.**

5 Set up the lock.

Continue to www.schlage.com to download the **Schlage Control Smart Locks User Guide**.