

**SARGENT**<sup>®</sup>

**ASSA ABLOY**

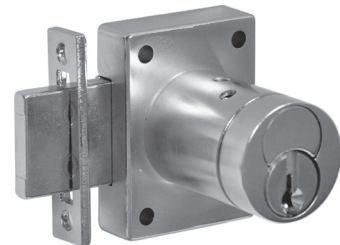
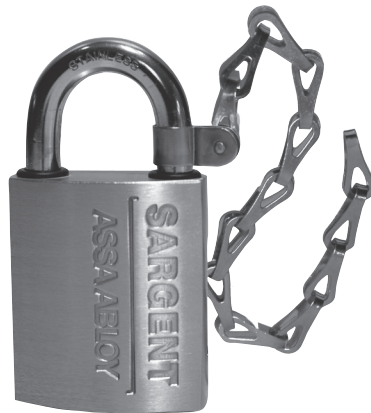
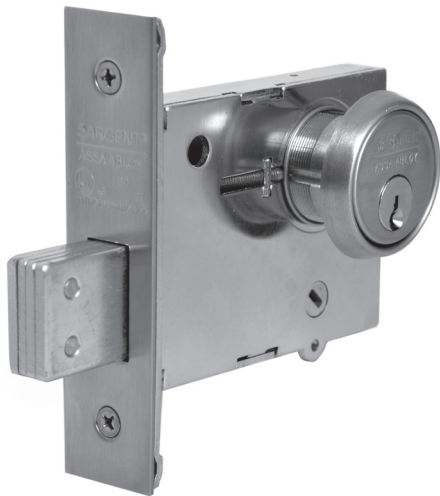
---

---

# Auxiliary Locks

---

---



# Table of Contents

## Auxiliary Locks

SSL1 Spring Latch For Security SideLight Applications.....	1
8200 Series Deadbolt Mortise Locks.....	2
4870 Series Mortise Deadbolts.....	3
480 Series Grade 1 Deadbolts.....	4
470 Series Grade 2 Deadbolts.....	5
460 Series Deadbolts.....	6
Padlocks.....	7
Locker Locks.....	8
Utility, Cabinet and Switch Locks.....	9
Cylinder Options.....	10-11

NOTE: Push/Pull latches has been moved to the Specialty Hardware catalog.

# SARGENT®

# ASSA ABLOY



### MicroShield®

As part of their promise to provide innovative solutions to their customers, certain ASSA ABLOY Group brands offer the MicroShield® technology, a silver-based antimicrobial coating designed to inhibit the growth of bacteria. MicroShield® is a registered trademark of Yale Security Inc., an ASSA ABLOY Group company.

### MicroShield® Coating

- Revolutionary finish coating available on all SARGENT product lines, utilizes a silver-based antimicrobial compound from Agion Technologies
- As an integral part of the finish coating, MicroShield® lasts for the life of the hardware
- MicroShield® coating permanently suppresses the growth of bacteria, algae, fungus, mold and mildew. It is effective against a broad spectrum of bacteria.
- Non-toxic and completely safe. The Agion antimicrobial compound is EPA and NSF approved and FDA listed for use in medical and food preparation equipment.
- Applications: Anywhere there is need for a clean environment (hospitals, laboratories, schools, medical centers, daycare, food processing etc.)



### Agion has achieved:



Agion's silver antimicrobial has been certified for its material content, recyclability, and manufacturing characteristics. Cradle To Cradle Certified<sup>CM</sup> products meet established standards for human health, environmental health and recyclability.

Cradle To Cradle Certified<sup>CM</sup> is a certification mark of MBDC.

# SSL1 Spring Latch

## Auxiliary Locks

### SARGENT SSL1 Auxiliary Latch

- SARGENT SSL1 is a spring loaded latchbolt retracted by a thumb turn on one side with no operation on the other side.
- The SSL1 Auxiliary Latch is the perfect solution for applications such as the Security Panel on the Security SideLight from CECO DOOR and CURRIES. Other applications include the top portion of a dutch door, communicating doors and shallow closets.
- Only recommended for areas with alternate exits
- ADA compliant thumb turn
- 3-hour UL fire rating
- 6 hardware finishes available

### Security SideLight Solution

- The SSL1 spring-loaded latch used in conjunction with CECO DOOR and CURRIES Security SideLight doors and frames provide a full solution
- The Security Panel allows a free flow of light and an attached door panel can cover the SideLight window pane to provide privacy and to offer protection in emergency situations

### Specifications

For Doors & Backset	2-3/4" (70mm) backset
Strike	2-3/4" (70mm) ANSI A115.2 curved lip strike # 800
Bolt	1/2" (13mm) throw
Hand	Non Handed
UL Listed	UL Listed for use on fire doors, See Underwriters Laboratories Building Materials List
Option	SG- option MicroShield® – Antimicrobial clear powder coat
Finishes	03, 04, 10, 10B, 10BE, 26, 26D
Door Prep	Single sided prep

Any retrofit or other field modification to a fire rated opening can potentially impact the fire rating of the opening, and Sargent Manufacturing Company makes no representations or warranties concerning what such impact may be in any specific situation. When retrofitting any portion of an existing fire rated opening, or specifying and installing a new fire-rated opening, please consult with a code specialist or local code official (Authority Having Jurisdiction) to ensure compliance with all applicable codes and ratings.

### How To Order

SG-	SSL1	26D
Option	Product	Finish



Security SideLight offered through CECO DOOR and CURRIES

Copyright © 2003, 2004, 2007-2013, Sargent Manufacturing Company, an ASSA ABLOY Group company. All rights reserved. Reproduction in whole or in part without the express written permission of Sargent Manufacturing Company is prohibited.

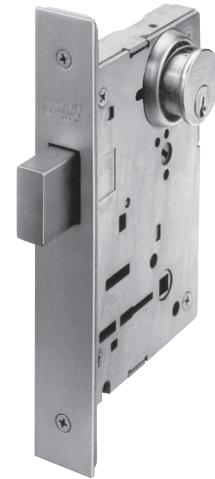
# 8200 Series Deadbolts

## Auxiliary Locks

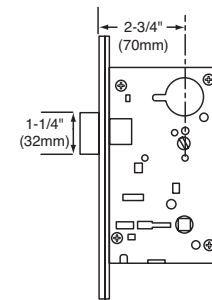
**SARGENT®**  
**ASSA ABLOY**

### Specifications

For Doors	Door thickness 1-3/4" (44mm) standard (For thicker doors, consult factory)
Backset	2-3/4" only
Strike	4-7/8" (124mm), ANSI Standard A115.1. Available finishes 03, 04, 09, 10, 10BE, 10BL, 15, 20D, 32, 32D
Deadbolt	One piece hardened stainless steel deadbolt with 1" (25mm) throw
Cylinder	Brass, 6 pin. 2 keys per lock. Also available with the SARGENT Signature and Keso and Keso F1 security systems <b>NOTE: See 8200 Mortise Lock catalog (page 25) for details on cylinder requirements.</b>
Masterkeying	Can be masterkeyed. Construction key systems available
Case	12 gauge heavy duty wrought steel, zinc dichromate plated
Outside Front Plate	Brass, bronze and stainless steel. 8" (203mm) x 1-1/4" (32mm), ANSI Standard 115.1. Adjustable at any angle from flat to beveled 1/8" (3mm) in 2" (51mm)
Hand	Non-handed
Mechanical Options	Cylinder Options see page 10 1- For 1-3/8" thick doors; front 1-1/16" wide 23- 4-7/8" (124mm) ANSI Strike with 1-1/8" (29mm) Flat Lip 31- Thick Doors - consult factory 36- 6 Lobe Torx® Security Screws 37- Spanner head security screws 74- Lock case wrapped in lead (specify hand) SG- MicroShield® - An antimicrobial clear powder coat WBS- Wrought Box Strike
Finishes	03, 04, 09, 10, 10B, 10BE, 10BL, 20D, 32 & 32D For other finishes consult factory



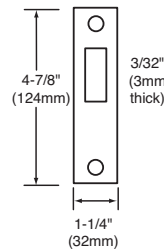
8200 Deadlock



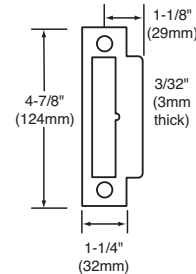
### How To Order

10-28-	8230	26D
Options	Series x Function	Finish
Mechanical Options this page	8203 8220 8221	03, 04, 09, 10, 10B, 10BE, 10BL, 20D, 32 & 32D
Cylinder Options page 11	8222 8223	

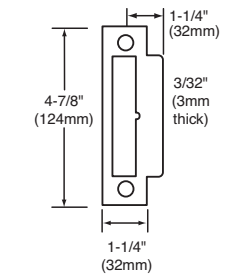
7730 Strike (Standard)



82-0229 Strike Flat Lip Alternative (23- Option)

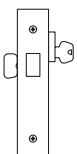


82-0109 Strike Curved Lip Alternative (Specify as 82-0109)



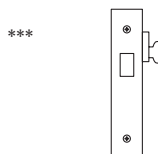
### Functions

#### 03 Classroom



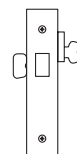
- Key outside operates deadbolt
- Thumb turn inside retracts deadbolt, but will not project it

#### 20 Deadlock



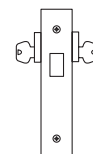
- Key outside operates deadbolt
- No inside operation
- ANSI F18

#### 21 Deadlock



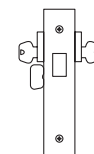
- Key outside operates deadbolt
- Thumb turn inside operates deadbolt
- ANSI F17

#### 22 Deadlock



- Key from either side operates deadbolt
- ANSI F16

#### 23 Classroom



- Key from either side operates deadbolt
- Thumb turn inside will retract deadbolt, but will not project it

\*\*\* For use only on rooms with more than one exit

NOTE: For deadbolt function locks with levers see the 8200 Mortise Lock Catalog

# 4870 Series Deadbolts

## Auxiliary Locks

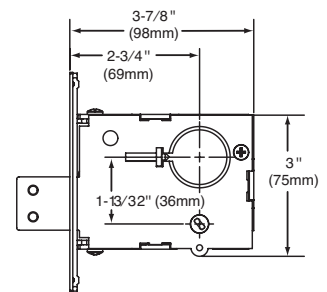


### Specifications

For Doors	Door thickness 1-3/4" (44mm) standard (For thicker doors, consult factory)
Backset	2-3/4" (70mm) only
Strike	# 480 Strike Standard: 3-1/2" (89mm) x 1-1/8" (29mm); For Strike Box, specify WBS when ordering
Bolt	Laminated Stacked Steel Deadbolt with Hardened Pin and a 1" throw
Cylinder	Brass 6 pin. Two nickel silver keys per lock (Control key must be ordered separately, when required)
Cylinder Ring	97 Rosette (standard with #41 Cylinder), 1KB rosette optional (specify on order) <b>NOTE:</b> See 8200 Mortise Lock catalog (page 25) for details on cylinder collar kit.
Case	Heavy wrought steel, .093 thick, protected with a zinc dichromate finish
Outside Front Plate	Brass, bronze, stainless steel. 4-5/8" (117mm) x 1-1/8" (29mm) Adjustable for flat or beveled doors (bevel adjustment 1/8" (3mm) in 2" (51mm))
Hand	Non handed, field reversible (except for 74-)
Thumb Turn	130W ADA Thumb turn (standard); optional larger thumb turn (specify LB-)
UL/cUL Listed	Listed for use on fire doors
Mechanical Options	Cylinder Options see page 10 28- 7710 Flat Lip Strike 4-7/8" (124mm) x 1-1/4" (32mm) ANSI A115-1 36- Torx® security screws 37- Spanner head security screws 74- Lock case wrapped in lead (specify hand) LB- Larger size ADA thumbturn SG- MicroShield® – an antimicrobial powder coat finish WBS- Wrought Box Strike
Finishes	03, 04, 09, 10, 10B, 10BE, 10BL, 20D, 32, 32D For other finishes consult factory



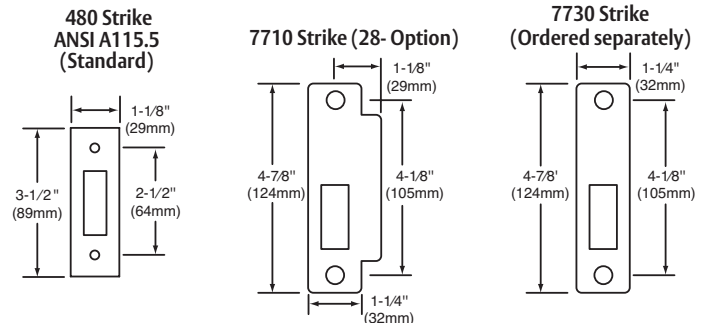
4870 Series Deadlock



Any retrofit or other field modification to a fire rated opening can potentially impact the fire rating of the opening, and Sargent Manufacturing Company makes no representations or warranties concerning what such impact may be in any specific situation. When retrofitting any portion of an existing fire rated opening, or specifying and installing a new fire-rated opening, please consult with a code specialist or local code official (Authority Having Jurisdiction) to ensure compliance with all applicable codes and ratings.

### How To Order

10-28-	4874	26D
Options	Series x Function	Finish
Mechanical Options this page	4874 4875	03, 04, 09, 10, 10B, 10BE, 10BL, 26, 26D, 32 & 32D
Cylinder Options page 10	4876	
	4877	
	4878 4879	



### Functions

4874 Double Cylinder	4875 Single Cylinder x Turn Lever	4876 Single Cylinder	4877 Classroom x Turn Lever	4878 Public Toilet	4879 Exit Lock
<ul style="list-style-type: none"> <li>• Key from either side operates deadbolt</li> <li>• <b>ANSI E06061</b></li> </ul>	<ul style="list-style-type: none"> <li>• Key outside operates deadbolt</li> <li>• Thumb turn inside operates deadbolt</li> <li>• <b>ANSI E06071</b></li> </ul>	<ul style="list-style-type: none"> <li>• Key outside operates deadbolt</li> <li>• No inside operation</li> <li>• <b>ANSI E06081</b></li> </ul>	<ul style="list-style-type: none"> <li>• Key outside operates deadbolt</li> <li>• Thumb turn inside retracts deadbolt, but will not project it</li> <li>• <b>ANSI E06091</b></li> </ul>	<ul style="list-style-type: none"> <li>• Key from either side operates deadbolt</li> <li>• Thumb turn inside retracts deadbolt, but will not project it</li> </ul>	<ul style="list-style-type: none"> <li>• Thumb turn inside operates deadbolt</li> <li>• No outside operation</li> </ul>

\*\*\* For use only on rooms with more than one exit

# 480 Series Grade 1 Deadbolts

## Auxiliary Locks

**SARGENT®**  
**ASSA ABLOY**

### Specifications

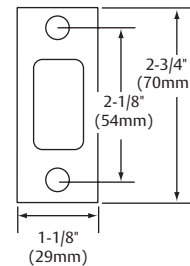
For Doors	1-3/8" (35mm) to 1-3/4" (44mm) thick standard For doors over 1-3/4" (44mm) consult factory (2-1/4" Thick door max)
Door Prep	Fits 161 (standard) cut outs and Fits 160 with 2-3/8" (60mm) backset with 1" (25mm) front and for 1-3/8" (35mm) thick door
Backsets	2-3/4" (70mm) standard. 2-3/8" (60mm) optional (20- option)
Strike	Wrought brass, bronze or stainless steel
Bolt	Solid steel with hardened steel pin insert and nickel silver plating 7/8" (22mm) x 5/8" (16mm) x 1" (25mm) throw
Cylinder	Brass, 6 pin. 2 nickel silver keys
Masterkeying	Can be masterkeyed. Construction key system available
Front	Wrought brass, bronze or stainless steel 2-1/4" (57mm) x 1-1/8" (29mm) with fixed bevel 1/8" (3mm) in 2" (51mm) furnished standard
Hand	Non handed, field reversible
Turn Lever	Non-ferrous
Housing	Non-ferrous, reinforced, one piece 2-1/2" (64mm) diameter LFIC options: housing brass & zinc, two piece Concealed screws on double cylinder function
Specification	Meets ANSI A156.5 Grade 1 requirements with 408 or 488 strike
UL/cUL Listed	UL listed to U.S. and Canadian safety standards
Positive Pressure	Conforms to standards UL 10C and UBC 7-2 (1997)
Mechanical Options	Cylinder Options see page 10 16- 400 "T" shaped strike with strike box 20- 2-3/8" (60mm) backset. 2-3/4" (70mm) x 1" (25mm) wide front 28- 408 Flat lip strike ANSI A115.2 36- 6-Lobe security Head Screw 37- Spanner Head Screw 48- 488 Reinforced strike with 4 mounting screws and strike box
Finishes	03, 04, 10, 10B, 10BE, 26, 26D For other finishes consult factory

### 480 Series Deadbolt

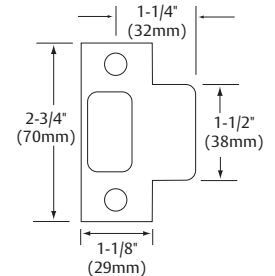
#### Inside Turn Lever



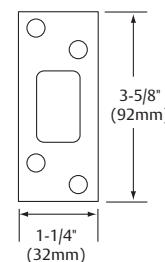
#### 404 Strike (Standard)



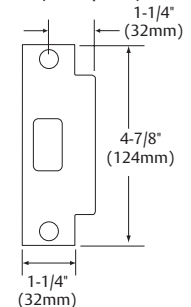
#### 400 T-Shaped Strike (16- Option)



#### 488 Reinforced Strike (48- Option)



#### 408 Flat Lip Strike (28- Option)



Any retrofit or other field modification to a fire rated opening can potentially impact the fire rating of the opening, and Sargent Manufacturing Company makes no representations or warranties concerning what such impact may be in any specific situation. When retrofitting any portion of an existing fire rated opening, or specifying and installing a new fire-rated opening, please consult with a code specialist or local code official (Authority Having Jurisdiction) to ensure compliance with all applicable codes and ratings.

### How To Order

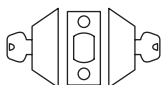
10-28-	487	26D
Options	Series x Function	Finish
Mechanical Options this page	484	03, 04, 10, 10B, 10BE, 26 & 26D
	485	
Cylinder Options Page 10	486	
	487	
	489	

### Packaging — 480 Series

Approximate Shipping Weights	
2 lbs. (.9 kg)/Box	10 Boxes/Case

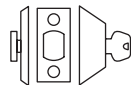
### Functions \* NOTE - Use only on rooms with more than one exit

#### \*484 Double Cylinder



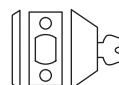
- Key from either side operates deadbolt
- ANSI E0141

#### 485 Single Cylinder



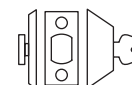
- Key outside operates deadbolt
- Thumb turn inside operates deadbolt
- ANSI E0151

#### \*486 Single Cylinder



- Key outside operates deadbolt
- Blank plate by exposed screws inside. Minimum 1" (25mm) required between doors
- ANSI E0161

#### 487 Classroom



- Key outside operates deadbolt
- Thumb turn inside retracts deadbolt, but will not project the deadbolt
- ANSI E0161

#### 489 Exit



- Thumb turn inside operates deadbolt
- Blank outside plate



# 470 Series Grade 2 Deadbolts

## Auxiliary Locks



### Specifications

For Doors	1-3/4" (44mm) to 2-3/8" (61mm) door thickness [except 475 with 2-1/16" (53mm) maximum thickness.] (1-3/8" door optional as 1-Option)
Door Prep	1-1/2" dia. (38mm) hole standard for all functions 2-1/8" dia. (54mm) hole (161 door prep) for 474 and 475 only with adapter ring provided
Backsets	2-3/8" (61mm) or 2-3/4" (70mm) adjustable backset
Strike	406 Strike standard 407 1/4" Radius Strike (Specify option 13-) 408 Flat Lip Strike 4-7/8" x 1-1/4" (Specify option 28-)
Bolt	Brass with hardened steel pin 5/8" (16mm) x 13/16" (21mm) x 1' (25mm) throw
Cylinder	Brass, 6 pin cylinder 2 keys provided
Masterkeying	Can be masterkeyed. Construction key system available
Specification	Grade 2 ANSI 156.5 1000 series
Front	Stamped brass 2-1/4" (57mm) x 1" (25mm) wide with filler for 1-1/8" (29mm) wide
Hand	Universal – non handed
Mechanical Options	Cylinder Options see page 10 1- 1-3/8" (35mm) thick door adapter 13- Front & strike with 1/4" (6mm) radius corners 15- Drive-in adjustable backset bolt x 26D only (Not Grade 2) 28- 408 Flat lip strike, 4-7/8" (124mm) x 1-1/4" (32mm). ANSI A115.2
Finishes	3, 4, 10, 10B, 10BE, 26, 26D

### How To Order

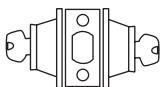
10-20-	475	26D
Options	Series x Function	Finish
Mechanical Options this page	474 475	03, 04, 10, 10B, 10BE, 26 & 26D
Cylinder Options page 10	479	

### Packaging — 470 Series

Approximate Shipping Weights	
2 lbs./Box	10 Boxes/Case

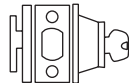
### Functions

#### 474 Double Cylinder



- Key from either side operates deadbolt
- \* Use only on rooms with more than one exit

#### 475 Single Cylinder x Thumbturn



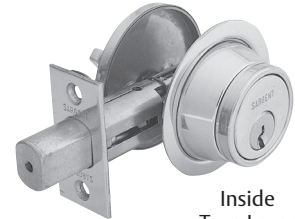
- Key outside operates deadbolt
- Thumb turn inside operates deadbolt

#### 479 Thumbturn Inside Only

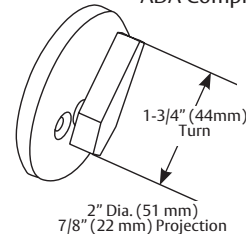


- Thumb turn inside operates deadbolt
- Inside mounting only

### 470 Series Deadbolt

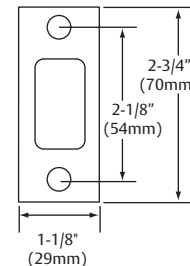


Inside Turn Lever  
ADA Compliant

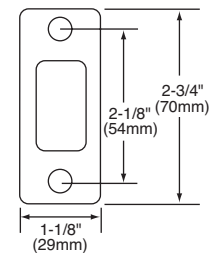


### Strikes

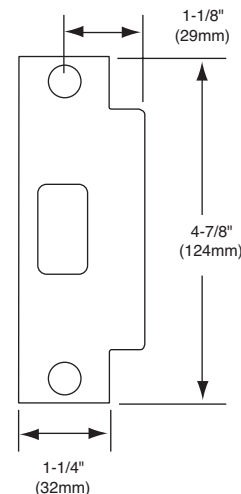
#### 406 Strike Standard



#### 407 Radius Strike 13- Option Includes Radius Front



#### 408 Flat Lip Strike 28- Option



Copyright © 2003, 2004, 2007-2013, Sargent Manufacturing Company, an ASSA ABLOY Group company. All rights reserved. Reproduction in whole or in part without the express written permission of Sargent Manufacturing Company is prohibited.

# 460 Series Deadbolts

## Auxiliary Locks

**SARGENT**  
**ASSA ABLOY**

### Specifications

For Doors	1-3/8" (35mm) to 1-3/4" (44mm) thick only
Backsets	2-3/4" (70mm) standard fits 161 door prep 2-3/8" (60mm) available fits 160 door prep
Strike	Brass and stainless steel 2-3/4" (70mm) x 1-1/8" (29mm) with strike box
Bolt	Solid brass 5/8" (16mm) x 13/16" x 1" (25mm) throw Hardened steel pin
Cylinder	Brass, 6 pin; Two nickel silver keys per lock
Cylinder Housing	Steel reinforced. Plated
Masterkeying	Can be masterkeyed. Construction key system available
Case	15/16" steel
Hand	Universal – non handed
Front	Brass and stainless steel 2-1/4" (57mm) x 1-1/8" (29mm) wide with filler
Turn Lever	Non ferrous
Mechanical Options	Cylinder Options see page 10 20- 2-3/8" (60mm) backset - 2-1/4" (57mm) x 1" (25mm) wide front 36- 6-Lobe security Head Screw 37- Spanner Head Screw
Finishes	<b>32D ONLY</b>

**NOTE:** Designed to meet ANSI/BHMA Grade 2

### How To Order

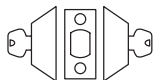
10-20-	465	32D
Options	Series x Function	Finish
Mechanical Options this page	464	32D Only
Cylinder Options page 10	465	

### Packaging — 460 Series

Approximate Shipping Weights	
2 lbs./Box	10 Boxes/Case

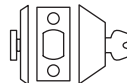
### Functions

#### 464 Double Cylinder



- Key from either side will operate the deadbolt
- \* Use only on rooms with more than one exit

#### 465 Single Cylinder



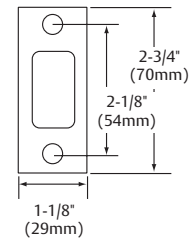
- Key outside operates deadbolt
- Thumb turn inside operates deadbolt

### 460 Series Deadbolt



### 405 Strike

#### Standard



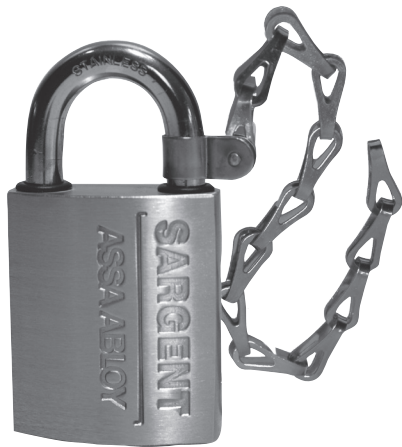


# Padlocks

## Auxiliary Locks

### 758 & 858 Padlock Features

- Cylinder easily removed while in the unlocked position for rekeying
- Available in the following single key sections S, R, U, CR and the following keyway families L, R, H, C, A, B, K, N, V
- Easily keyed into SARGENT master keyed systems
- 6 pin cylinder standard
- Shackle locked by dual ball bearings for extra security



### Specifications: 758 & 858 Padlocks Body-Solid Brass for exterior applications

Cylinder	Utilizes standard 10 Line cylinder with shorter padlock tail piece, keyed different as standard (cylinder catalog part no. C750-1)
758	Key retaining padlock, key removable in locked position only
858	Non key retaining, key can be removed while unlocked and relocked without key
Case	Satin brass. Solid one piece construction 2" x 2-1/4"
Keys	Two keys provided as standard
Shackle Heights	1" Standard, for 2" (specify 758-2 & 858-2), and 4" (specify 758-4 & 858-4) all 11/32" diameter
Shackle Material	Stainless steel shackle standard for 758 and 858 Hardened steel - optional (specify 758HS or 858HS)
Weather Protection Standard	Shackle protected with rubber shields to prevent freezing in the winter
Chain (optional)	Chain 9" long (specify 758C or 858C)

758 & 858 Padlocks options see page 10

### How To Order

SC-	758	2	HS	C
Options	Padlocks	Shackle Height	Shackle Material	Chain
Cylinder options see page 9	758	1" - Std	Hardened Steel - HS	C
	858	2" - 2		
		4" - 4		

### Keso F1 & Keso 856 & 857 Padlocks

- Available with Keso F1- and Keso; specify F1-82- for Keso F1- specify 82 for std Keso
- Same cylinder security as offered in other Keso Security System locks. Can be masterkeyed with all locks in the system
- Positive deadlocking construction — no springs which can be forced
- Two stainless steel balls lock shackle. Forcing of shackle increases locking action



82-856 Shown

### Specifications: F1-82-856 and F1-82-857

856	Non key retaining padlock
857	Key Retaining Key removable in locked position only
Case	Brass
Case Finishes	Satin brass standard
Case Dimensions	2" x 2" x 1-1/8"
Shackle	Stainless Steel standard Hardened steel, Nickel Plated - optional (specify 856HS or 857HS)
Shackle Diameter	11/32"
Shackle Clearance	1" Standard, for 2-1/2" (specify 856-2 & 857-2), and 4" (specify 856-4 & 857-4)
Weather Protection Standard	Shackle protected with rubber shields to prevent freezing in the winter
Chain (optional)	Chain 9" long (specify 856C or 857C)

### How To Order

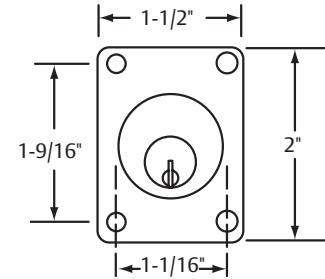
F1-82-	856	-2	HS	C
Options	Padlocks	Shackle Height	Shackle Material	Chain
F1-82-	856	1" - Std	Hardened Steel - HS	C
82-	857	2-1/2" - 2		
		4" - 4		

# Locker Locks

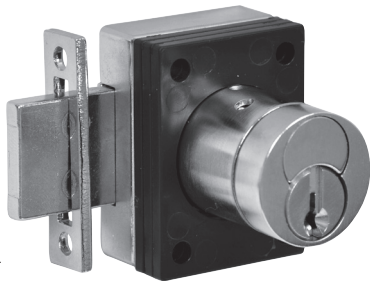
## Auxiliary Locks

### Specifications: Series 1655

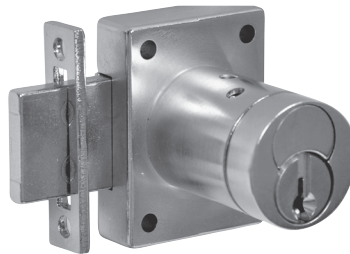
For Doors	One size for doors 1-1/2" thick and when used with 4 supplied 1/8" spacers can be used on thinner doors down to 1 inch thick
For Stiles	1-1/2" wide minimum
Strike	Universal
Bolt	Steel, 15/16" projection
Cylinder	Brass, 6 pin standard, (cylinder catalog part no. C 1655-1) with different tail piece (part no. 13-1813)
Keying options	2 change keys per lock provided, 5 pin available 10- SARGENT Signature Key System 11- SARGENT XC Key System 21- SARGENT Construction key system (Lost Key) 22- SARGENT Construction key (Split Key)
Case	Non ferrous alloy
Hand	Easily field reversible
Finishes	4, 26D



**1655MKD - Can be masterkeyed (MKD) and grand masterkeyed in most SARGENT 6 pin systems. Consult factory for details. Cylinder easily removed for rekeying.**



1655 shown with spacers for use on thinner doors



1655 shown without spacers



C 1655-1 cylinder

### How To Order

Specify	Note	Example
Option	21-	21-
Product	1655	21-1655
Finish	26D	21-1655 x 26D
Keying	AA45	21-1655 x 26D AA45

Copyright © 2003, 2004, 2007-2013, Sargent Manufacturing Company, an ASSA ABLOY Group company. All rights reserved. Reproduction in whole or in part without the express written permission of Sargent Manufacturing Company is prohibited.

# Utility, Cabinet and Switch Locks

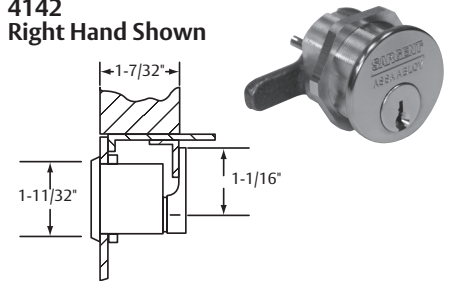
## Auxiliary Locks



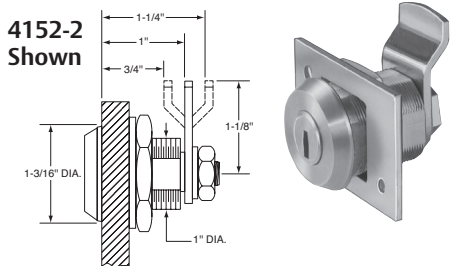
### Specifications: 4142-4143 Utility & Cabinet Lock

For Metal Doors	Up to 7/8" thick
Cylinder	Brass, 6 pin, can be master keyed with most other SARGENT locks
Cam	Bronze, 4142 horizontal in locked position (attached with 2 screws)
Keys	Two 6 pin provided
Cylinder Options	21- SARGENT Construction key system (Lost Key) 22- SARGENT Construction key (Split Key)
Hand	4142 supplied right hand as standard, easily field reversible
Easily field reversible	4142 Horizontal in Locked Position (Cam Rotated) 4143 Vertical in locked position
Finishes	03, 04, 09, 10, 10B, 10BE, 10BL, 15, 20D, 32, 32D

### 4142 Right Hand Shown



### 4152-2 Shown



### Specifications: KESO 4152, 4153, and 4253 Utility Lock for Drawers

For Drawers	Up to 3/4" thick
Cam	Flat Steel Cam (order as 4152) 1/4" Offset Steel Cam (order as 4152-2)
Cylinder	Keso security system only. Can be masterkeyed with all other Keso locks in the system
Mounting Plate	Furnished with screws for mounting to wood or metal drawers Can be brazed to metal doors
Field Reversible	Right or left hand
Finishes	3, 4, 10, 26, 26D

### How To Order

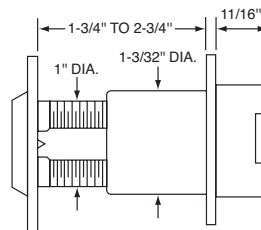
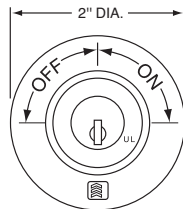
- Example: 4142 x US26

## Switch Locks



### 4153

- Keso F1 & Keso security system cylinder
- Adjustable from 1-3/4" to 2-3/4"
- Operates UL Listed switch
- SPDT maintained
- Finish: US26
- Switch rating: 250VAC, 5 amp. 30VDC, 3 amp



### 4253

- Listed in UL Burglary Protection Equipment
- Keso F1 & Keso security system cylinder
- Operates UL Listed switch
- SPDT maintained
- List under connector and switches (25L30)
- Drill and pick resistant
- Finish: 26
- Switch rating: 250VAC, 5 amp. 30VDC, 3 amp

### How To Order

- Example: 4153 x 26

# Cylinder Options by Product Line

## Auxiliary Locks

Cylinder Type	Option	Description	8200 & 4870 Dead Bolt	480 Dead Bolt	470 Dead Bolt	460 Dead Bolt	758 & 858 Padlocks	856 & 857 Padlocks	1655 Locker Lock	4141-4143 Utility & Cabinet Locks	4152, 4153, 4253 Utility Locks
Conventional Cylinder	Std	SARGENT Conventional Cylinders	Yes	Yes	Yes	Yes	Yes	N/A	N/A	N/A	N/A
Degree Key System	DG1-	SARGENT Degree Key System Level 1	Yes	Yes	Yes	Yes	Yes	N/A	N/A	N/A	N/A
	DG1-21-	Degree Level 1 Construction Master Keying	Yes	Yes	Yes	Yes	Yes	N/A	N/A	N/A	N/A
	DG1-60-	Degree Level 1 Removable Disposable Construction Core	Yes	Yes	Yes	Yes	Yes	N/A	N/A	N/A	N/A
	DG1-63-	Degree Level 1 Removable Core	Yes	Yes	Yes	Yes	Yes	N/A	N/A	N/A	N/A
	DG1-64-	Degree Level 1 Removable Construction Keyed LFIC	Yes	Yes	Yes	Yes	Yes	N/A	N/A	N/A	N/A
	DG1-65-	Degree Level 1 Unassembled/Uncombined Core	Yes	Yes	Yes	Yes	Yes	N/A	N/A	N/A	N/A
	DG2-	SARGENT Degree Key System Level 2	Yes	Yes	Yes	Yes	Yes	N/A	N/A	N/A	N/A
	DG2-21-	Degree Level 2 Construction Master Keying	Yes	Yes	Yes	Yes	Yes	N/A	N/A	N/A	N/A
	DG2-60-	Degree Level 2 Removable Disposable Construction Core	Yes	Yes	Yes	Yes	Yes	N/A	N/A	N/A	N/A
	DG2-63-	Degree Level 2 Removable Core	Yes	Yes	Yes	Yes	Yes	N/A	N/A	N/A	N/A
	DG2-64-	Degree Level 2 Removable Construction Keyed LFIC	Yes	Yes	Yes	Yes	Yes	N/A	N/A	N/A	N/A
	DG2-65-	Degree Level 2 Unassembled/Uncombined Core	Yes	Yes	Yes	Yes	Yes	N/A	N/A	N/A	N/A
	DG3-	SARGENT Degree Key System Level 3	Yes	Yes	Yes	Yes	Yes	N/A	N/A	N/A	N/A
	DG3-21-	Degree Level 3 Construction Master Keying	Yes	Yes	Yes	Yes	Yes	N/A	N/A	N/A	N/A
	DG3-60-	Degree Level 3 Removable Disposable Construction Core	Yes	Yes	Yes	Yes	Yes	N/A	N/A	N/A	N/A
	DG3-63-	Degree Level 3 Removable Core	Yes	Yes	Yes	Yes	Yes	N/A	N/A	N/A	N/A
DG3-64-	Degree Level 3 Removable Construction Keyed LFIC	Yes	Yes	Yes	Yes	Yes	N/A	N/A	N/A	N/A	
Signature Key System	10-	SARGENT Signature Key System (Not Available with other Key Systems)	Yes	Yes	Yes	Yes	Yes	N/A	Yes	N/A	N/A
	10-21-	SARGENT Signature Construction Key System (Lost Ball)	Yes	Yes	Yes	Yes	Yes	N/A	Yes	N/A	N/A
	10UL-	SARGENT Signature UL437 Key System (Not Available with other Key Systems)	Yes	N/A	N/A	N/A	N/A	N/A	N/A	N/A	N/A
Signature: Large Format Interchangeable Core (Removable Core)	10-63-	SARGENT Signature LFIC (Removable Core) Cylinder	Yes	Yes	N/A	N/A	Yes	N/A	N/A	N/A	N/A
XC- Key System	11-	XC Key System (Not Available with other Key Systems, Unless specified)	Yes	Yes	Yes	Yes	Yes	N/A	Yes	N/A	N/A
	11-21-	XC- Construction Key System (Lost Ball)	Yes	Yes	Yes	Yes	Yes	N/A	Yes	Yes	N/A
XC- Large Format Interchangeable Core + (Removable Core)	11-60-	Hardware to accept XC- Permanent LFIC (Removable Core), Disposable plastic Core- provided	Yes	Yes	N/A	N/A	Yes	N/A	N/A	N/A	N/A
	11-63-	Hardware provided with XC- LFIC (Removable Core) Cylinder - (Includes masterkeying, grand masterkeying)	Yes	Yes	N/A	N/A	Yes	N/A	N/A	N/A	N/A
	11-64-	Hardware provided with Keyed construction core to accept XC- LFIC (Removable) Permanent Core (ordered Separately)	Yes	Yes	N/A	N/A	Yes	N/A	N/A	N/A	N/A
XC- Small Format Interchangeable Cores+	11-70-7P-	Hardware to accept XC- SFIC (7 pin) XC- Permanent Cores, plastic disposable core provided	Yes	Yes	N/A	N/A	N/A	N/A	N/A	N/A	N/A
	11-72-7P-	Hardware to accept XC- SFIC (7 pin Keyed Construction Core provided) cylinder, Permanent core ordered separately	Yes	Yes	N/A	N/A	N/A	N/A	N/A	N/A	N/A
	11-73-7P-	Hardware supplied with XC- Small Format 7 pin interchangeable core (Includes masterkeying, grand masterkeying)	Yes	Yes	N/A	N/A	N/A	N/A	N/A	N/A	N/A
	11-65-73-7P-	Hardware to accept XC- Uncombined 7 pin SFIC (Permanent) Core - (Packed Loose)	Yes	Yes	N/A	N/A	N/A	N/A	N/A	N/A	N/A
Construction Key Systems	21-	SARGENT Lost Ball Construction Keying for Conventional, XC and Signature Series (N/A with 63-, 73-, 82-, SC- & SE-)	Yes	Yes	Yes	Yes	Yes	N/A	Yes	Yes	N/A
	22-	SARGENT Construction Split Key System for Conventional Cylinders (Existing Systems) (N/A with 10-, 11-, 63-, 73-, 82-, SC- & SE-)	Yes	Yes	Yes	Yes	Yes	N/A	Yes	Yes	N/A
Old Style Removable Core	51-	Removable Core Cylinder (Old Style) provided (Existing systems only)	Yes	N/A	N/A	N/A	Yes	N/A	N/A	N/A	N/A
	52-	Removable Construction Core (Old Style) Permanent core ordered separately ( existing systems only)	Yes	N/A	N/A	N/A	Yes	N/A	N/A	N/A	N/A

Copyright © 2003, 2004, 2007-2013, Sargent Manufacturing Company, an ASSA ABLOY Group company. All rights reserved. Reproduction in whole or in part without the express written permission of Sargent Manufacturing Company is prohibited.

90129;K:12/15/13

**NOTE:** For V-10 Cylinder and information, contact ASSA  
**NOTE:** When tying into existing key systems contact Key Records for compatibility  
 + For use in SARGENT hardware ordered to accept XC- option

# Cylinder Options by Product Line

## Auxiliary Locks

**SARGENT**

**ASSA ABLOY**

Cylinder Type	Option	Description	8200 & 4870 Deadbolt	480 Dead Bolt	470 Dead Bolt	460 Dead Bolt	758 & 858 Padlocks	856 & 857 Padlocks	1655 Locker Lock	4141-4143 Utility & Cabinet Locks	4152, 4153, 4253 Utility Locks
Large Format Interchangeable Core (Removable Core)	60-	Hardware to accept Permanent LFIC (Removable Core), Disposable plastic Core provided (Permanent Cores Ordered Separately)	Yes	Yes	N/A	N/A	Yes	N/A	N/A	N/A	N/A
	63-	6 pin LFIC permanent core provided	Yes	Yes	N/A	N/A	Yes	N/A	N/A	N/A	N/A
	64-	Hardware supplied with Keyed LFIC construction core to accept Permanent LFIC Core (ordered Separately)	Yes	Yes	N/A	N/A	Yes	N/A	N/A	N/A	N/A
Small Format Interchangeable Cores	70-	Hardware to accept 6 or 7 Pin SFIC Permanent Cores (ordered separately), plastic disposable core provided	Yes	Yes	N/A	N/A	N/A	N/A	N/A	N/A	N/A
	72-	Hardware to accept 6 or 7 Pin SFIC supplied with Keyed Construction Core. (Permanent Core Ordered separately)	Yes	Yes	N/A	N/A	N/A	N/A	N/A	N/A	N/A
	73-	Hardware supplied with 6 pin SFIC (Includes masterkeying, grand masterkeying)	Yes	Yes	N/A	N/A	N/A	N/A	N/A	N/A	N/A
	65-73-	Hardware provided to accept Uncombined 6 pin SFIC (Permanent) Core - (Packed Loose for field keying)	Yes	Yes	N/A	N/A	N/A	N/A	N/A	N/A	N/A
	65-73-7P-	Hardware provided to accept Uncombined 7 pin SFIC (Permanent) Core - (Packed Loose for field keying)	Yes	Yes	N/A	N/A	N/A	N/A	N/A	N/A	N/A
	73-7P-	Hardware supplied with Small Format 7 Pin Interchangeable Core (Includes masterkeying, grand masterkeying)	Yes	Yes	N/A	N/A	N/A	N/A	N/A	N/A	N/A
Keso F1 & Keso	81-	Hardware provided with housings to accept Keso (83) & Keso F1 (F1-83-) removable cores. (Permanent Cores Ordered Separately)	Yes	N/A	N/A	N/A	N/A	N/A	N/A	N/A	Std.
	82-	Hardware provided with standard Keso Security Cylinder	Yes	N/A	N/A	N/A	N/A	Std	N/A	N/A	N/A
	F1-82-	Hardware provided with standard Keso F1 Security Cylinder (Patented)	Yes	N/A	N/A	N/A	N/A	Specify F1-	N/A	N/A	Specify F1-
	83-	Hardware supplied with SARGENT Keso Security Removable Core cylinder	Yes	N/A	N/A	N/A	N/A	N/A	N/A	N/A	N/A
	F1-83-	Hardware supplied with SARGENT Keso F1 Security Removable Core cylinder (Patented)	Yes	N/A	N/A	N/A	N/A	N/A	N/A	N/A	N/A
	84-	Hardware provided with SARGENT Keso Construction Cores (Permanent Removable Cores ordered separately)	Yes	N/A	N/A	N/A	N/A	N/A	N/A	N/A	N/A
Bump Resistant	BR-	Bump Resistant Cylinder (Available with Conventional & Conventional XC Cylinders Only)	Yes	Yes	Yes	Yes	Yes	N/A	N/A	N/A	N/A
Less Cylinder	LC-	Less Cylinder	Yes	Yes	Yes	Yes	N/A	N/A	N/A	N/A	N/A
Schlage Keyways	SC-	Schlage C keyway cylinder, 0 bitted	Yes	Yes	Yes	N/A	Yes	N/A	N/A	N/A	N/A
	SE-	Schlage E keyway cylinder, 0 bitted	Yes	Yes	Yes	N/A	Yes	N/A	N/A	N/A	N/A

**NOTE:** For V-10 Cylinder and information, contact ASSA

**NOTE:** When tying into existing key systems contact Key Records for compatibility

+ For use in SARGENT hardware ordered to accept XC- option

Copyright © 2003, 2004, 2007-2013, Sargent Manufacturing Company, an ASSA ABLOY Group company. All rights reserved. Reproduction in whole or in part without the express written permission of Sargent Manufacturing Company is prohibited.

SARGENT Manufacturing Company  
100 Sargent Drive  
New Haven, CT 06511 USA  
800-727-5477  
[www.sargentlock.com](http://www.sargentlock.com)

ASSA ABLOY is the global  
leader in door opening solutions,  
dedicated to satisfying  
end-user needs for security,  
safety and convenience