

# CROWDERFRAME 'EXTRA WIDTH' MODIFICATION INSTRUCTION SHEET

## FOR DOORS 38" TO 48" WIDE



### PARTS LIST

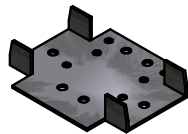
(ADDITIONAL TO PARTS INCLUDED WITH STANDARD POCKET DOOR KIT)



STEEL UPRIGHTS (2)



1" X 3" X 96" MDF BOARD (1)  
REPLACES THE 1" X 3" X 72" MDF BOARD



FOOT BRACKET (1)



5/16" EXTERNAL TOOTH LOCK WASHER (2)



#8 X 3/4" SCREWS (4)



1/4" - #14 X 3/4" HEX TEK SCREW (2)



1" DRYWALL SCREWS (12)

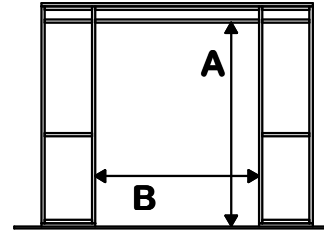
### CHART A (EXTRA WIDTH) 38" TO 48" WIDE DOORS

ROUGH OPENING SIZE

ROUGH OPENING HEIGHT (A) FOR DOORS UP TO 7' MUST BE AT LEAST 90-1/2" (2299 mm).  
ROUGH OPENING HEIGHT (A) FOR DOORS UP TO 8' MUST BE AT LEAST 102-1/2" (2604 mm).

DOOR WIDTH ROUGH OPENING WIDTH (B)

3'-2" (965 mm)	76-3/8" (1940 mm)
3'-4" (1016 mm)	80-3/8" (2042 mm)
3'-6" (1067 mm)	84-3/8" (2143 mm)
3'-8" (1118 mm)	88-3/8" (2245 mm)
3'-10" (1169 mm)	92-3/8" (2346 mm)
4'-0" (1219 mm)	96-3/8" (2448 mm)



TO DETERMINE ROUGH OPENING WIDTH FOR NON-STANDARD DOORS, MULTIPLY DOOR WIDTH BY TWO (2) AND ADD 3/8".

### CHART C (EXTRA WIDTH) 38" TO 48" WIDE DOORS

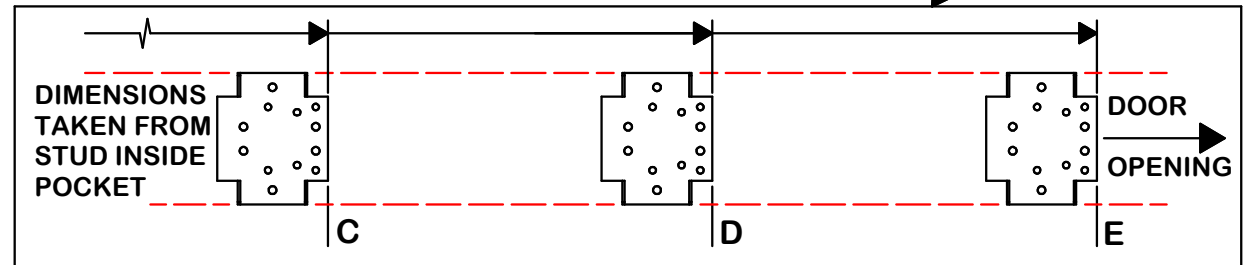
FLOOR BRACKET LOCATION

DOOR WIDTH	DIMENSION C	DIMENSION D	DIMENSION E*
3'-2" (965 mm)	12-7/16" (316 mm)	25-7/16" (646 mm)	38-7/16" (976 mm)
3'-4" (1016 mm)	14-7/16" (367 mm)	27-7/16" (697 mm)	40-7/16" (1027 mm)
3'-6" (1067 mm)	14-7/16" (367 mm)	28-7/16" (722 mm)	42-7/16" (1078 mm)
3'-8" (1118 mm)	16-7/16" (418 mm)	30-7/16" (773 mm)	44-7/16" (1129 mm)
3'-10" (1169 mm)	16-7/16" (418 mm)	31-7/16" (799 mm)	46-7/16" (1180 mm)
4'-0" (1219 mm)	16-7/16" (418 mm)	32-7/16" (824 mm)	48-7/16" (1230 mm)

\* ASSUME 3/4" JAMB TRIM

### STEPS 9-20

FOLLOW STEPS FROM STANDARD POCKET DOOR KIT INSTRUCTIONS.



### STEPS 1-6

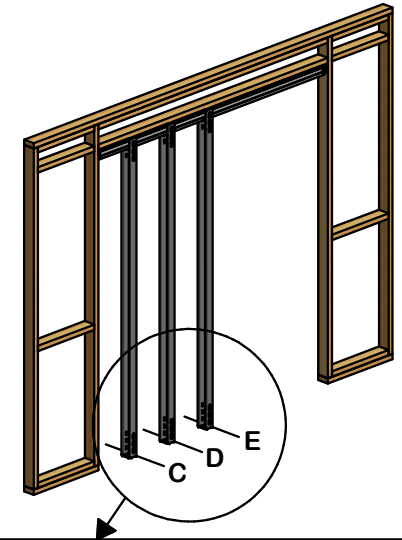
FOLLOW STEPS FROM STANDARD POCKET DOOR KIT INSTRUCTIONS.

### STEP 7

LOCATE AND MARK LINES PERPENDICULAR TO THE CHALK LINES OF THE WALL FOR FOOT BRACKET LOCATION. REFER TO CHART "C" (EXTRA WIDTH) FOR THE MEASUREMENTS.

### STEP 8

POSITION FOOT BRACKETS AT LINE DETERMINED IN PREVIOUS STEP. CENTRE BETWEEN WALL LINES MARKED IN STEP 6. SEE ILLUSTRATION FOR HOLE ORIENTATION. SECURE TO FLOOR WITH #8 X 3/4" SCREWS (6).



**Crowdertrack**  
"Smooth as flight"

### K.N. CROWDER MFG. INC.

1220 BURLOAK DRIVE  
BURLINGTON, ONTARIO, CANADA, L7L 6B3  
TELEPHONE: 905-315-9788 - FAX: 905-315-8090  
TOLL FREE FAX: 1-800-567-0123

### K.N. CROWDER INC.

210 EIGHTH STREET SOUTH  
LEWISTON, NEW YORK, U.S.A. 14092  
TELEPHONE: 1-716-754-8247  
TOLL FREE FAX: 1-800-567-0123

WEBSITE: [www.kncrowder.com](http://www.kncrowder.com) -- E-MAIL: [customerservice@kncrowder.com](mailto:customerservice@kncrowder.com)

**KNC**