



Keyed knobs and levers

Safe and easy exit, Grade 2

Safe. Easy. Schlage.

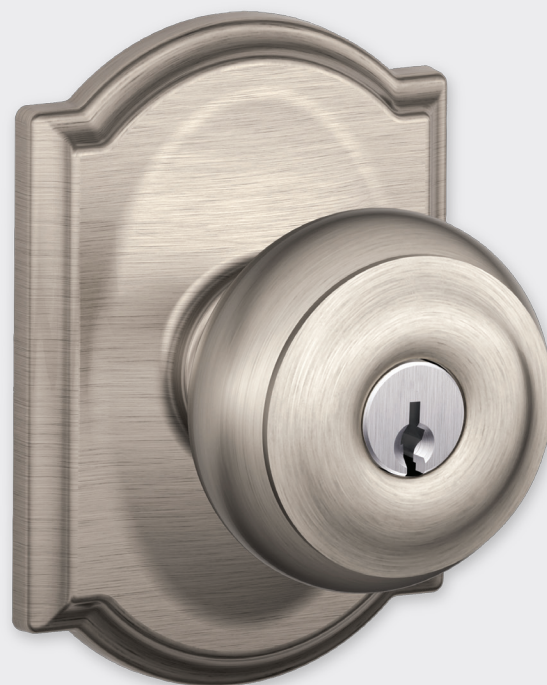
Our new Safe and Easy Exit keyed entry lock makes Schlage even stronger.

Schlage's keyed function allows you to safely and conveniently leave your home without unlocking your door; and automatically unlocks, allowing you easy re-entry.

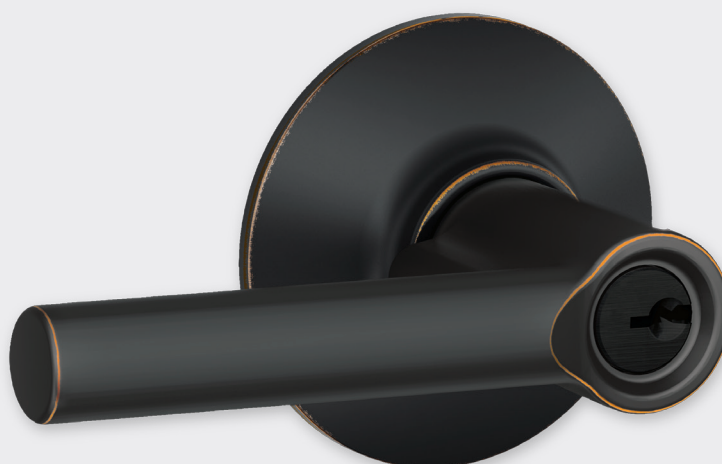
Strong has a name

For the past 90 years, Schlage has been creating the strongest and most technologically advanced products to help our consumers secure and monitor their homes and businesses.

Our goal is simple. We want to provide our consumers with products that make you feel confident in the choice you've made.



Satin Nickel Georgian Knob
with a Camelot Rose



Aged Bronze Broadway Lever



Keyed Knobs and Levers

More than simply protecting your home, they protect the privacy of each room inside it. Plus, Schlage's Decorative Collections make it easy to match our strength to your style. With more than 1,000 customized design and finish options in all, your décor will be limited by only your imagination. Find out more at schlage.com

Security

- Grade 2 Higher Residential Security Rating
- Highest residential security for a knob/lever product
- Anti-pick shield prevents tampering

Quality

- Limited lifetime mechanical and finish warranty
- Finish on latches, strikes, and screws match finish on levers/knobs
- Anti-rotational tabs keep the lock from turning after installation, preventing door damage and providing a close-fitting and more secure installation

Convenience

- Field reversible levers
- Easy installation with screws self-aligning to mounting posts
- Guaranteed to fit on existing, standard pre-drilled doors
- Installs with a Phillips screwdriver
- Universal latches adjust our locks to standard doors

Visit Schlage.com to learn more.

Knob designs



Andover
Satin Nickel



Bell
Bright Brass



Georgian
Matte Black



Orbit
Bright Chrome



Plymouth
Aged Bronze



Siena
Antique Brass



Bowery
Satin Nickel

Lever designs



Accent
Satin Chrome



Avanti
Aged Bronze



Avila
Antique Brass



Birmingham
Satin Nickel



Broadway
Bright Chrome



Callington
Bright Brass



Champagne
Aged Bronze



Elan
Satin Chrome



Flair
Satin Nickel



Latitude
Bright Chrome



Manhattan
Bright Brass



Merano
Aged Bronze



St. Annes
Antique Brass



Sacramento
Satin Nickel

About Allegion

Allegion (NYSE: ALLE) creates peace of mind by pioneering safety and security. As a \$2 billion provider of security solutions for homes and businesses, Allegion employs more than 8,000 people and sells products in more than 120 countries across the world. Allegion comprises 27 global brands, including strategic brands CISA®, Interflex®, LCN®, Schlage® and Von Duprin®. For more, visit www.allegion.com

aptiQ ■ LCN ■ **SCHLAGE** ■ STEELCRAFT ■ VON DUPRIN



© 2014 Allegion
MR-4078
Rev. 5-14
allegion.com