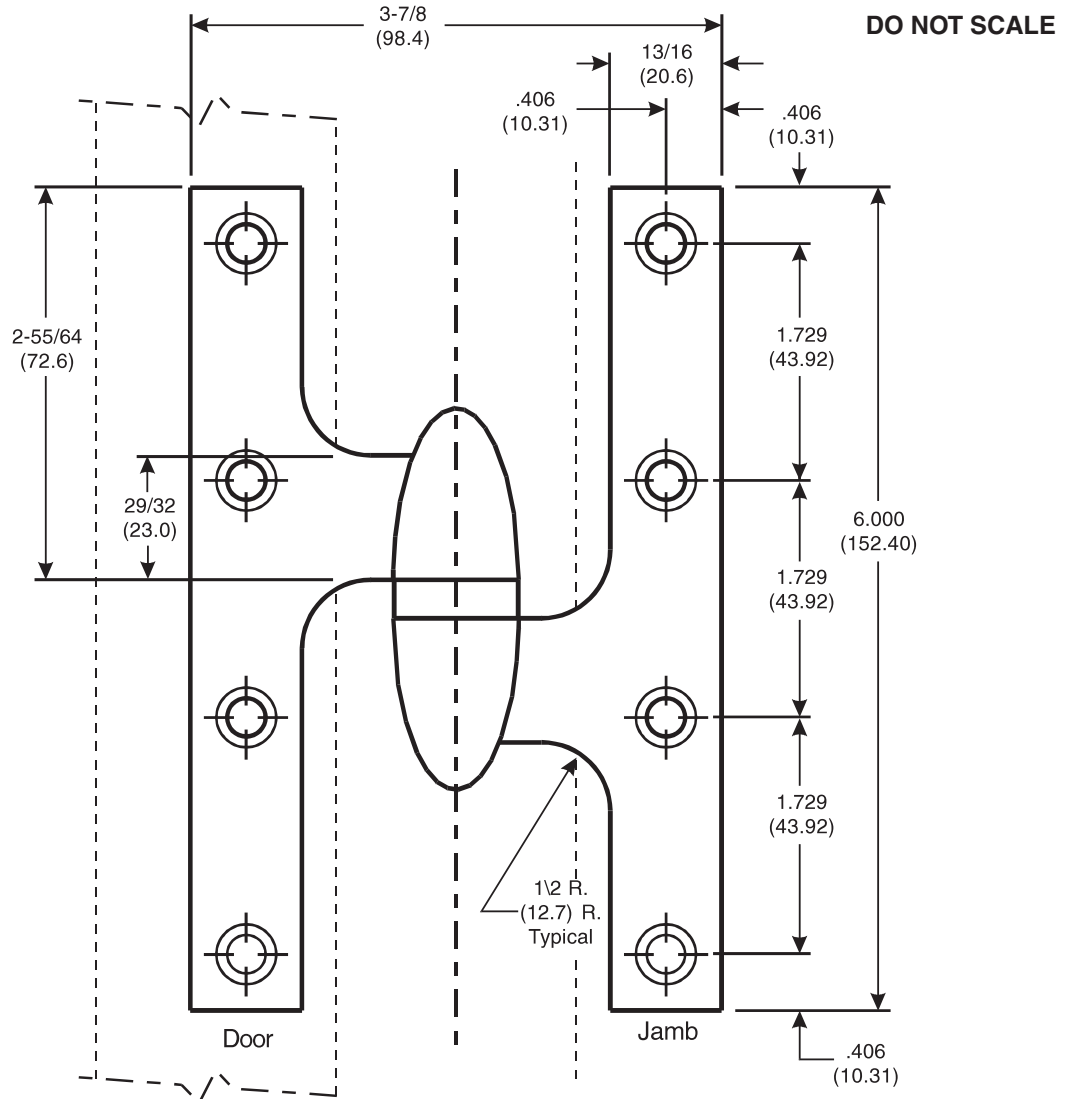
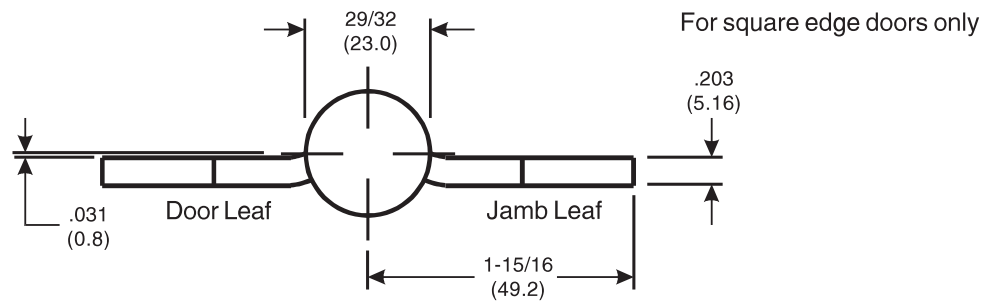


6 X 3-7/8 TA3383 FULL MORTISE OLIVE KNUCKLE TEMPLATE HINGES



Right hand hinge shown
 Left hand opposite



McKINNEY Template Olive Knuckle Hinges are made in size, gauge and with screw holes located to conform to this drawing.
 Machine Screw Size - 1/2 x 12-24 F.H.
 Wood Screw Size - 1-1/4 x 12 F.H.
 Hinges are handed.

McKINNEY Products Company • 225 Episcopal Road • Berlin, CT 06037 • PHONE: 800-346-7707 • FAX: 800-541-1073

ASSA ABLOY, the global leader in door opening solutions